

# SSFA comparison

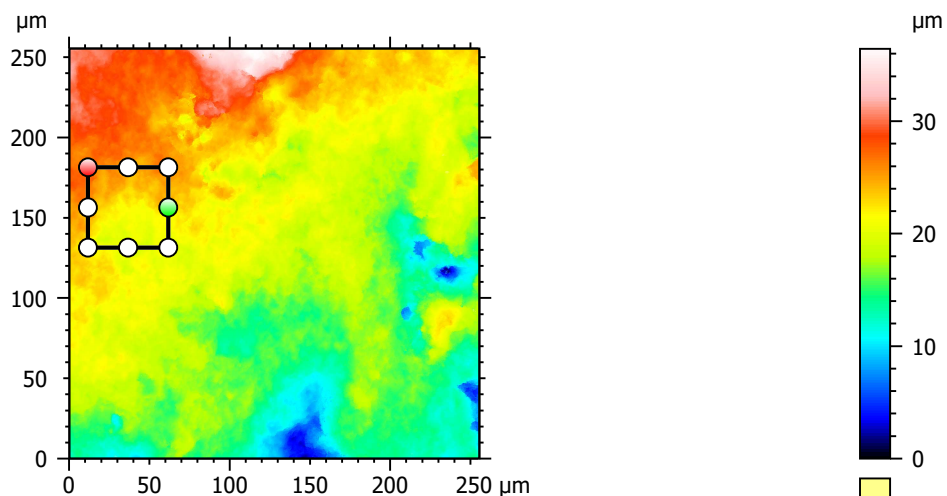
Template to process all lithic surfaces acquired with the Zeiss LSM 800 with the 50x/0.95 objective.

## A. Processing

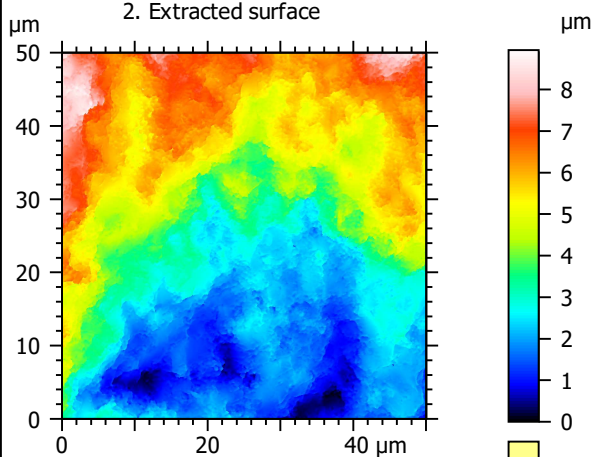
### Identity card

|                  |   |        |  |
|------------------|---|--------|--|
| Name:            | FLT3-9_LSM_50x-0.95_20190321_Area2_Topo   |        |  |
| File path:       | D:\Data\3Ddata\SSFA\Lithics\Original surfaces\FLT3-9_LSM_50x-0.95_20190321_Area2_Topo.sur |        |  |
| Created on:      | 3/21/2019 4:36:18 PM  |        |  |
| Studiable type:  | Surface   |        |  |
|                  |   |        |  |
| Axis:            | X   |        |  |
| Length:          | 255.5   | µm     |  |
| Size:            | 3000  | points |  |
| Spacing:         | 0.08519   | µm     |  |
|                  |   |        |  |
| Axis:            | Y   |        |  |
| Length:          | 255.5   | µm     |  |
| Size:            | 3000  | points |  |
| Spacing:         | 0.08519   | µm     |  |
|                  |   |        |  |
| Axis:            | Z   |        |  |
| Layer type:      | Topography  |        |  |
| Length:          | 36.44   | µm     |  |
| Size:            | 65532   | digits |  |
| Spacing:         | 0.0005561   | µm     |  |
| NM-points ratio: | 0.1406 % (12658 Pts)  |        |  |

### 1. Acquired surface

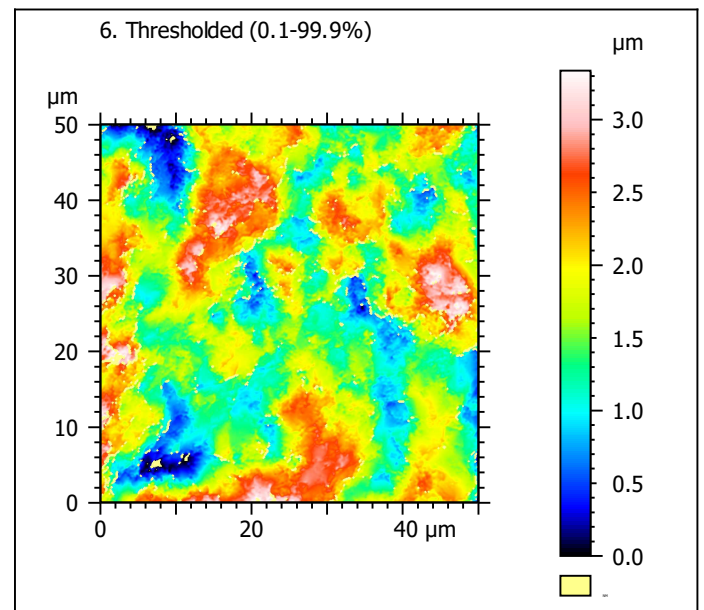
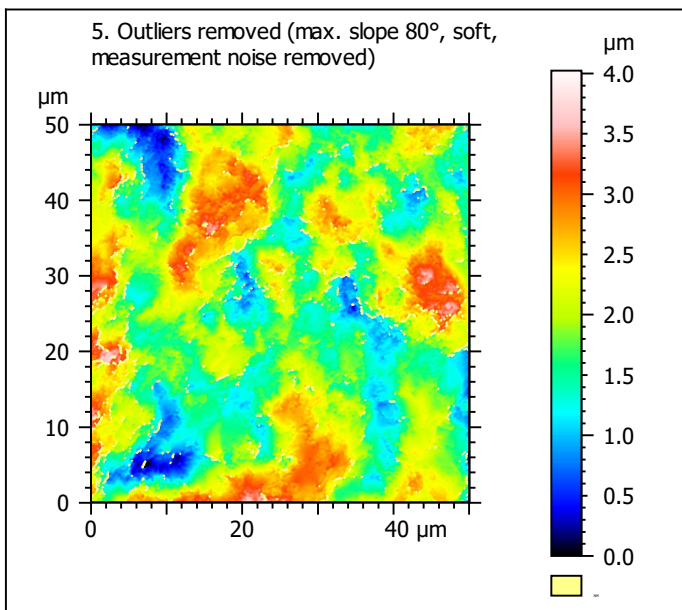
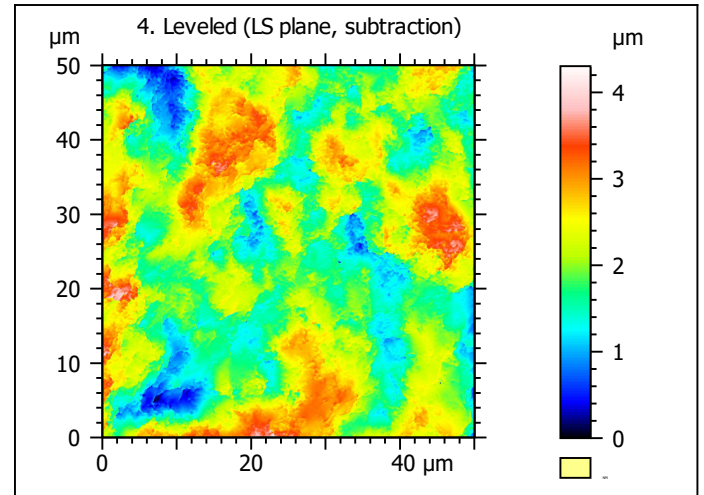
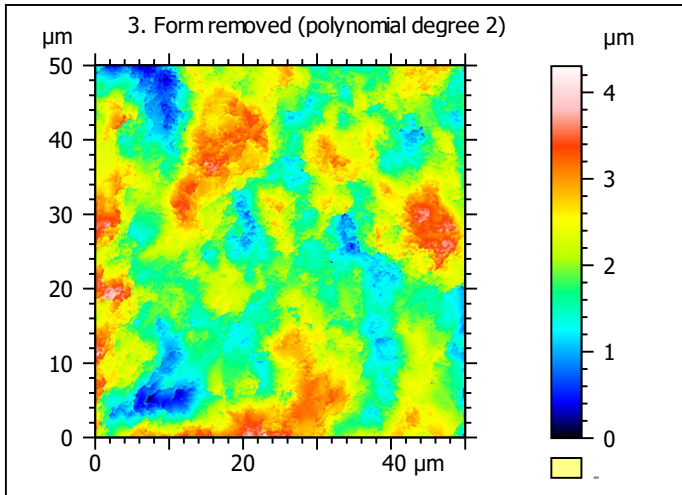


### 2. Extracted surface



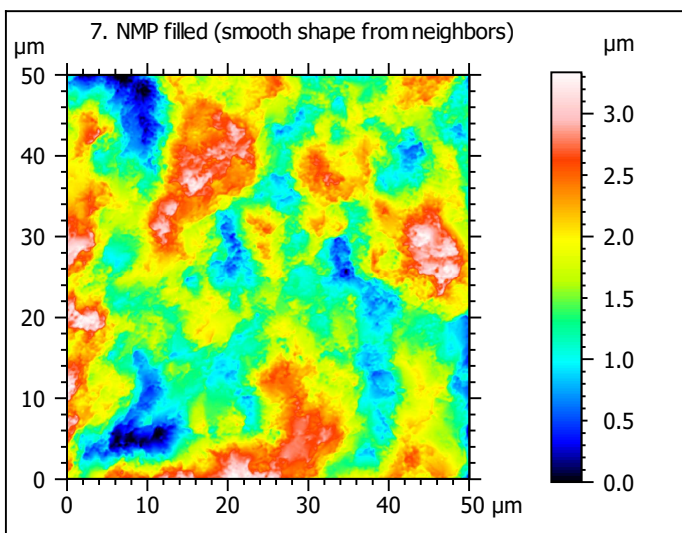
### Identity card

|                  |   |        |  |
|------------------|---|--------|--|
| Name:            | FLT3-9_LSM_50x-0.9...opo > Extracted area |        |  |
|                  |   |        |  |
| Axis:            | X   |        |  |
| Length:          | 50.00                                     | μm     |  |
| Size:            | 588                                       | points |  |
|                  |   |        |  |
| Axis:            | Y   |        |  |
| Length:          | 50.00                                     | μm     |  |
| Size:            | 588                                       | points |  |
|                  |   |        |  |
| Axis:            | Z   |        |  |
| Layer type:      | Topography                                |        |  |
| Length:          | 8.948                                     | μm     |  |
| Size:            | 16092                                     | digits |  |
| NM-points ratio: | 0.004338 % (15 Pts)                       |        |  |

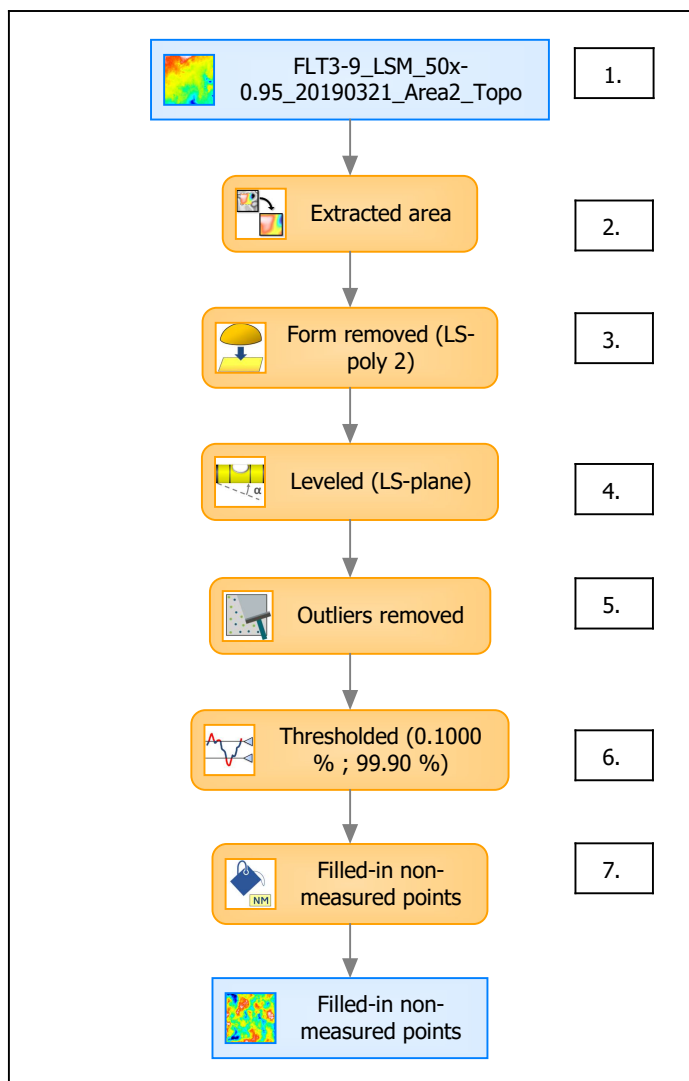


| Identity card    |  |
|------------------|--|
| Name:            | FLT3-9_LSM_50x-0.9...e) > Outliers removed |
| Axis:            | Z  |
| NM-points ratio: | 3.650 % (12620 Pts)                        |

| Identity card    |  |
|------------------|--|
| Name:            | FLT3-9_LSM_50x-0.9...0.1000 % ; 99.90 %) |
| Axis:            | Z  |
| NM-points ratio: | 3.842 % (13285 Pts)                      |



## B. Summary



### Identity card

Name: FLT3-9\_LSM\_50x-0.95\_20190321\_Area2\_Topo > Extracted area ...resholded (0.1000 % ; 99.90 %) > Filled-in non-measured points

Studiabale type: Surface

#### Axis: X

Length: 50.00  $\mu\text{m}$   
Size: 588 points  
Spacing: 0.08519  $\mu\text{m}$

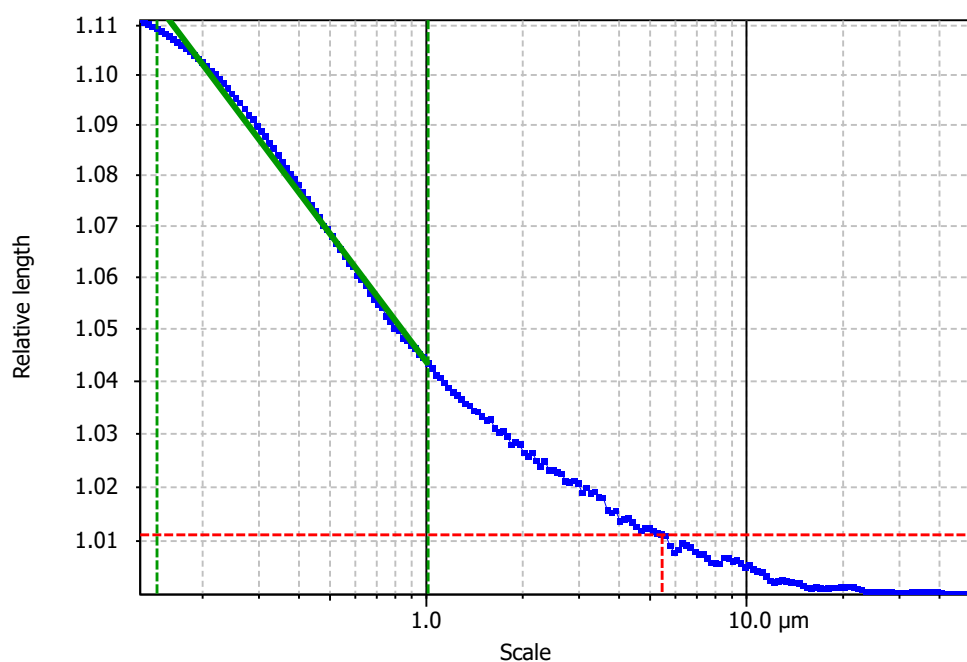
#### Axis: Y

Length: 50.00  $\mu\text{m}$   
Size: 588 points  
Spacing: 0.08519  $\mu\text{m}$

#### Axis: Z

Layer type: Topography

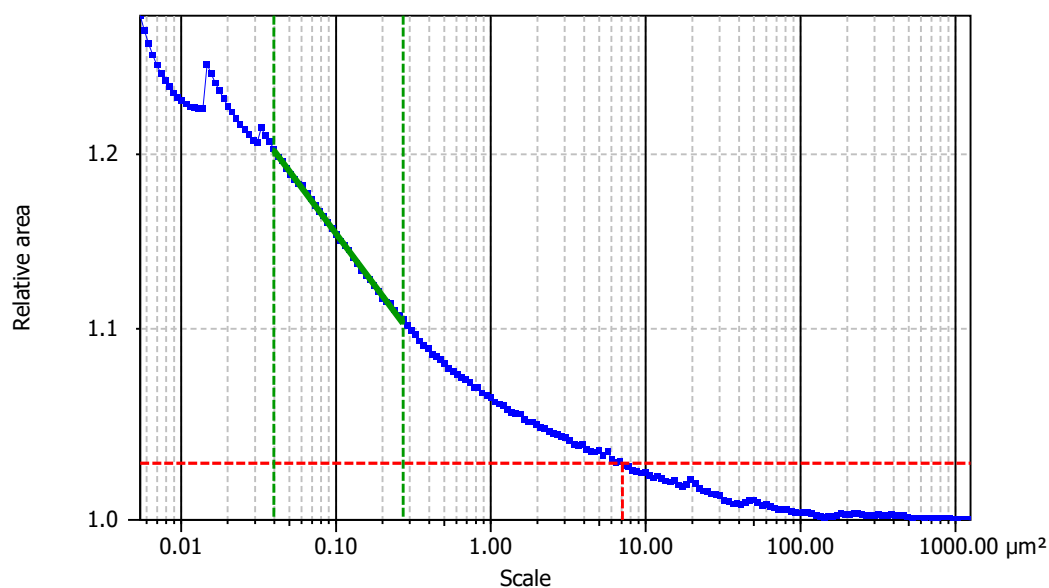
Length: 3.338  $\mu\text{m}$   
Size: 6002 digits  
Spacing: 0.0005561  $\mu\text{m}$

**Information**

|        |                     |
|--------|---------------------|
| Method | Length-scale (rows) |
|--------|---------------------|

**Parameters**

| Parameters | Value    | Unit | Comment                                      |
|------------|----------|------|--|
| epLsar     | 0.002143 |      | Length-scale anisotropy (Sfrax) (1.8 μm, 5°) |
| NewEplsar  | 0.01716  |      | Length-scale anisotropy (1.8 μm, 5°)         |

**Information**

|        |                           |
|--------|---------------------------|
| Method | Area-scale (four corners) |
|--------|---------------------------|

**Parameters**

| Parameters     | Value   | Unit            | Comment                         |
|----------------|---------|-----------------|---------------------------------|
| R <sup>2</sup> | 0.9988  |                 | Reg. coefficient R <sup>2</sup> |
| Asfc           | 44.86   |                 | Fractal complexity              |
| Smfc           | 0.1005  | μm <sup>2</sup> | Scale of max complexity         |
| HAsfc9         | 0.09026 |                 | Heterogeneity of Asfc (3x3)     |
| HAsfc81        | 0.2586  |                 | Heterogeneity of Asfc (9x9)     |